

美好 活“纸”为你我

APP

2017

 APP

天

地

人



“ ”

APP

”

”

”

2017
" "

2017

APP

"

" "

"

"

"

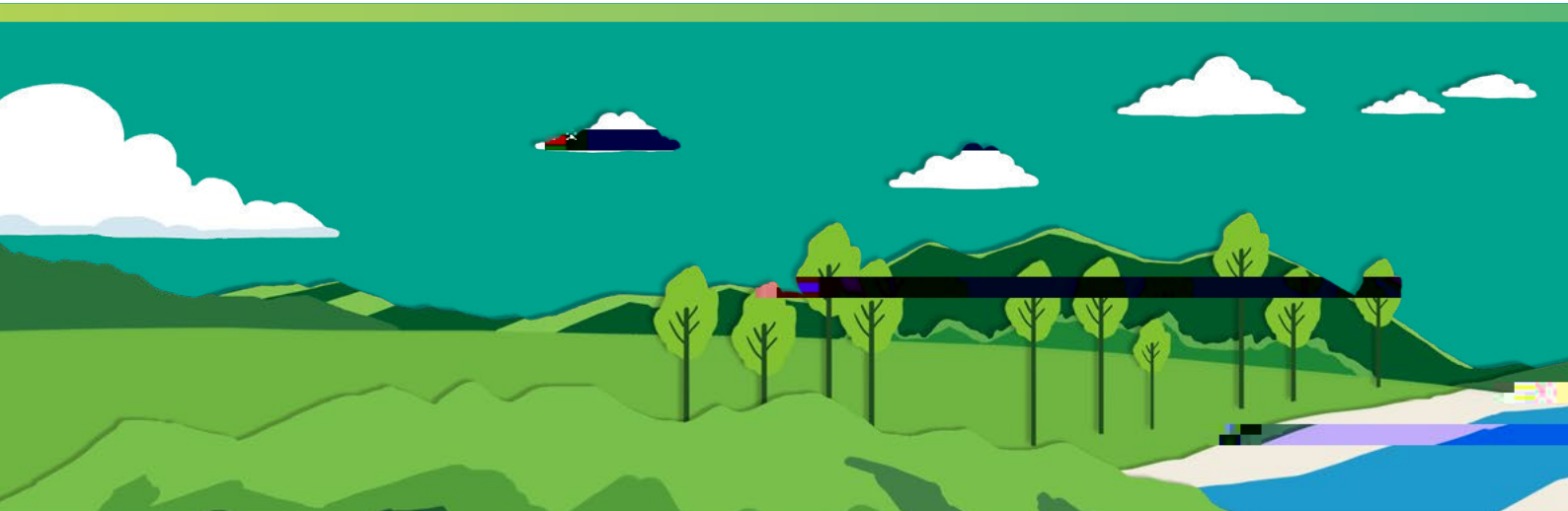
"

"

"

"

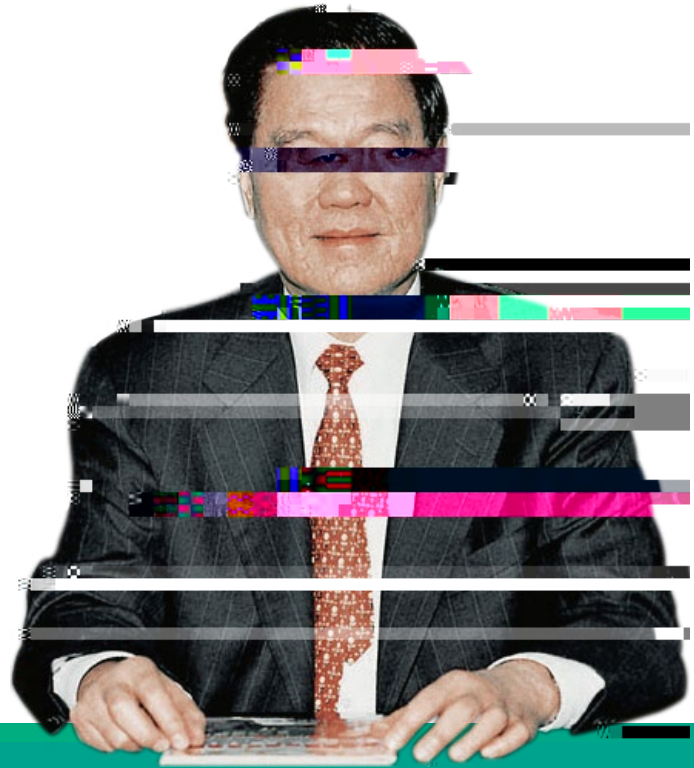
"

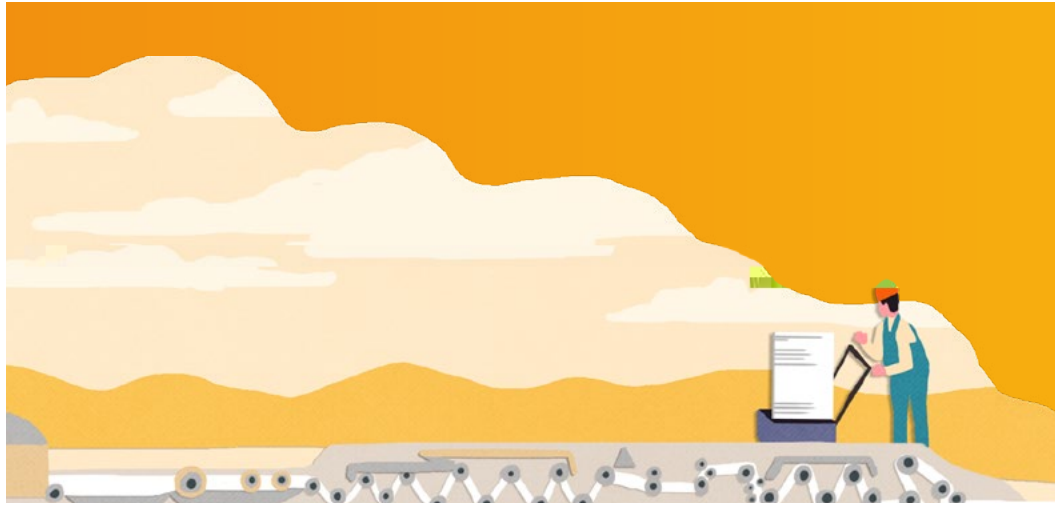


2018

40

黄志源





APP

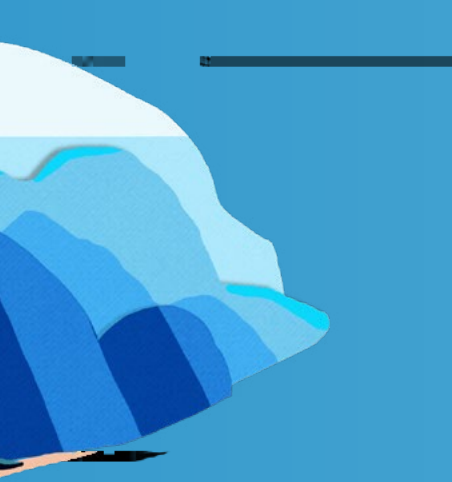




10
11
11
14
16
18



01 22
25
28
34



02 39
41
42



03 46
51

54 GRI

54
55
55
61
62
64

68
71 GRI

73

74

APP

2017



1,582

2017



527

2017



30,862



APP

5

1992

APP

"

"

APP

2017

APP

30

19

1,582

2017

APP

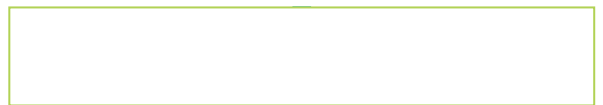
527

3





APP





2017			
"	2017	"	
2017			



500	500	\	

2017-2019			
" NEVIA"			
2017	"	"	





2017-2019			
"	"		
"	"		







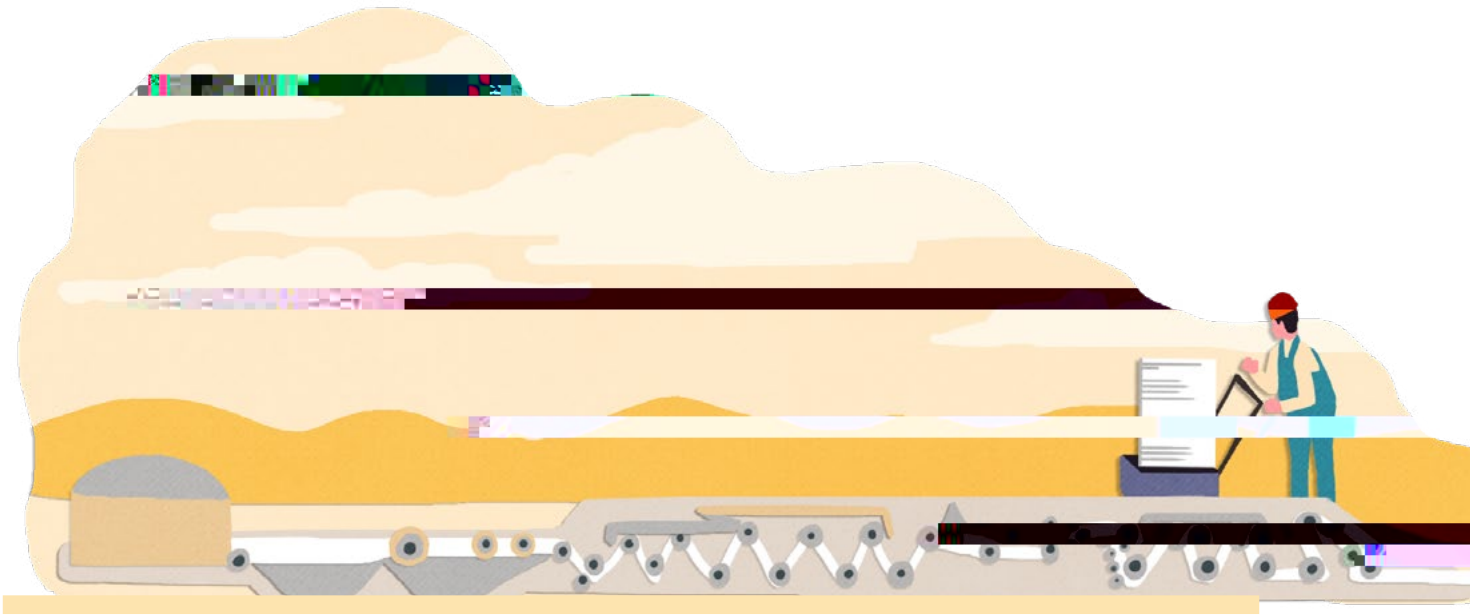
" "

2017-2019





100



“ ”

78

200

.....

APP

" " " "

APP

→

4.0*

4.0+

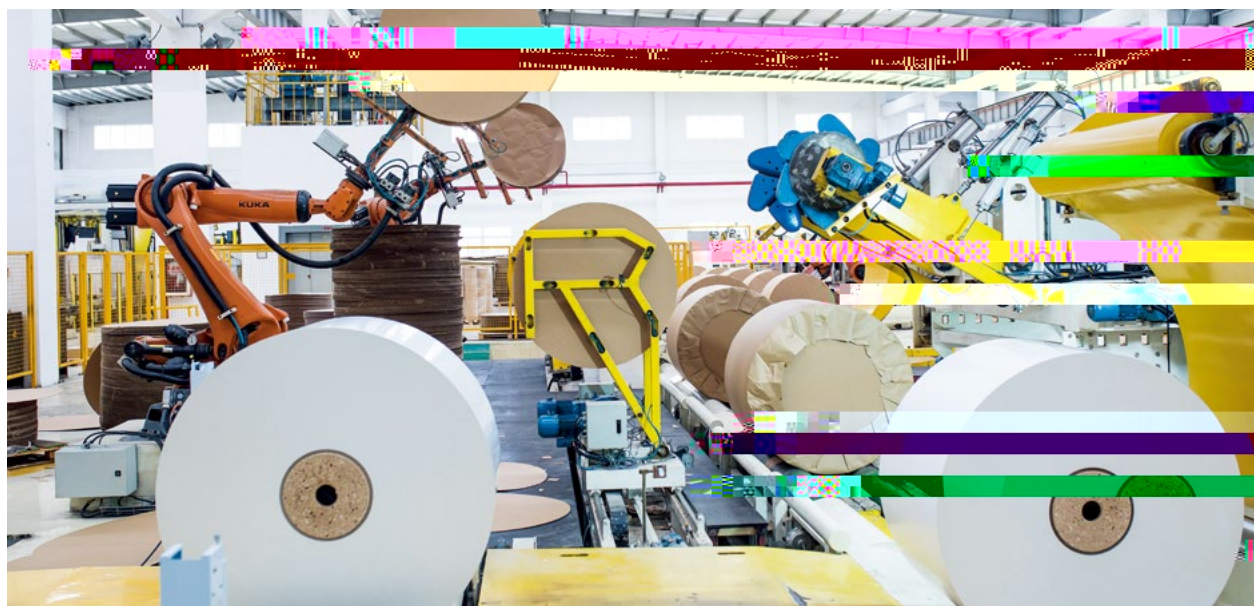
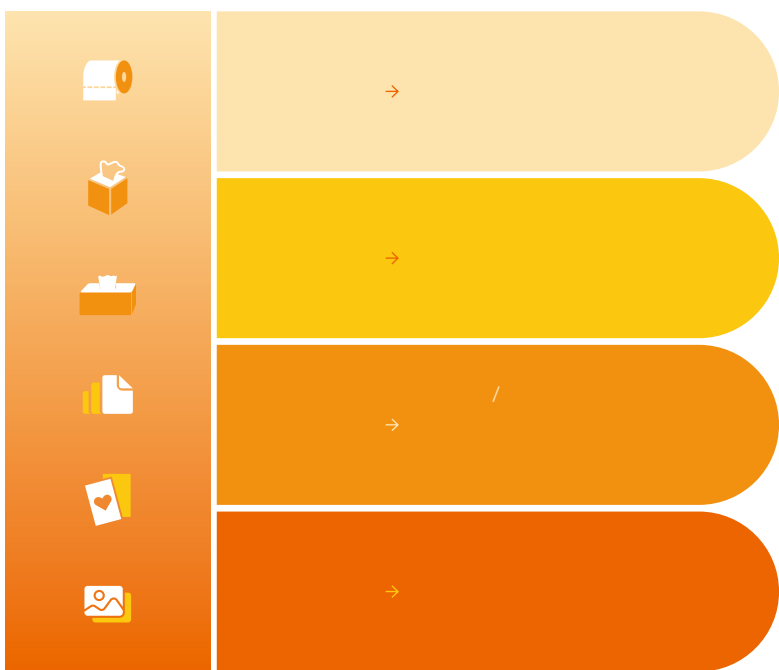


2018

IBM

A+

APP







APP

90

APP

"

"



"

"



"

"



APP

"

"

CFCC
PEFC

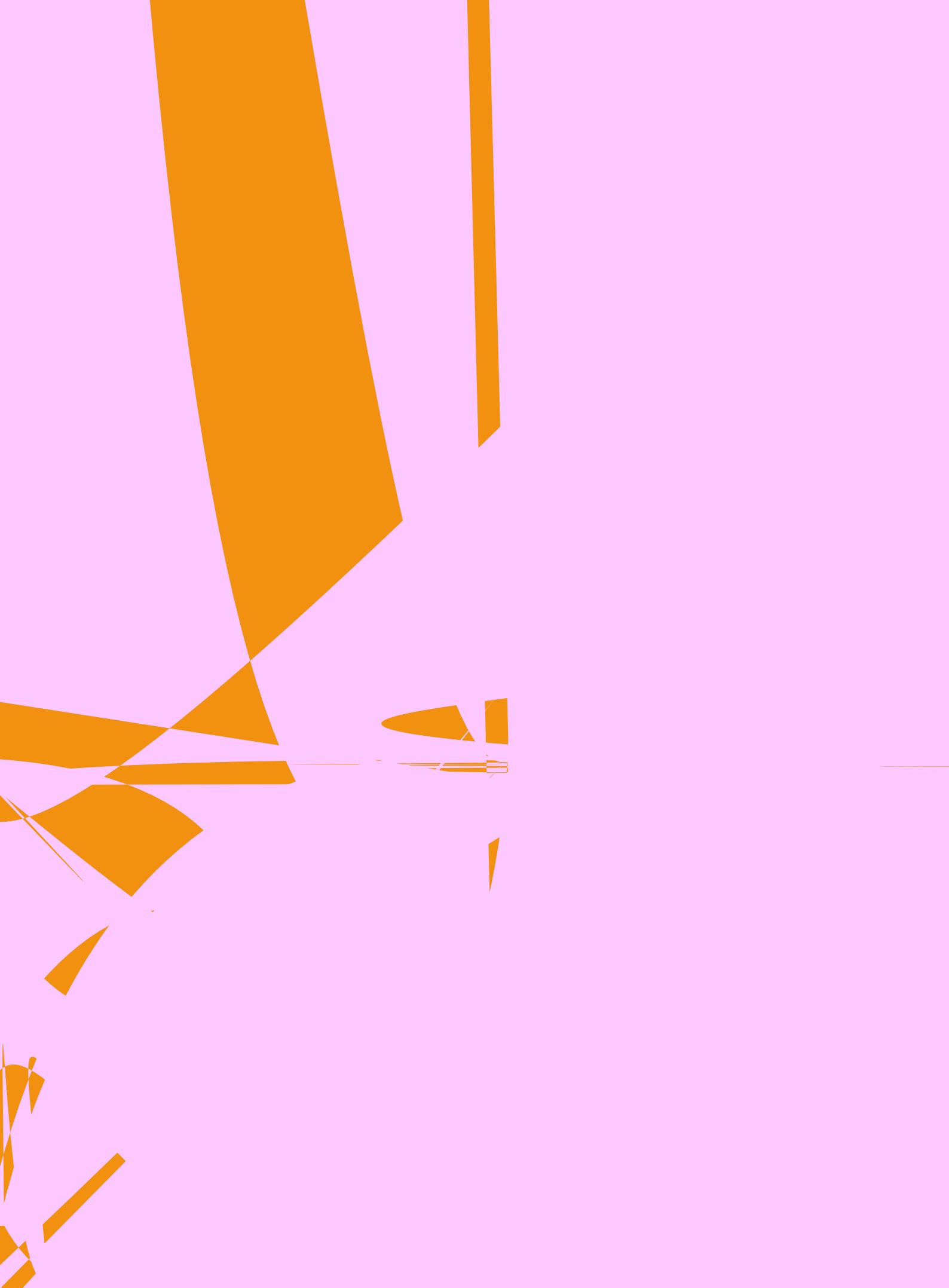
APP

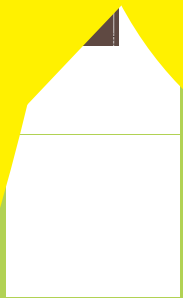
CFCC PEFC

APP

APP







296



320



110



APP



- 1
- 2
- 3



143



115



84



43

01



“ ”

APP

CFCC/PEFC

“ ”

“ ”

“ ”

SDGs



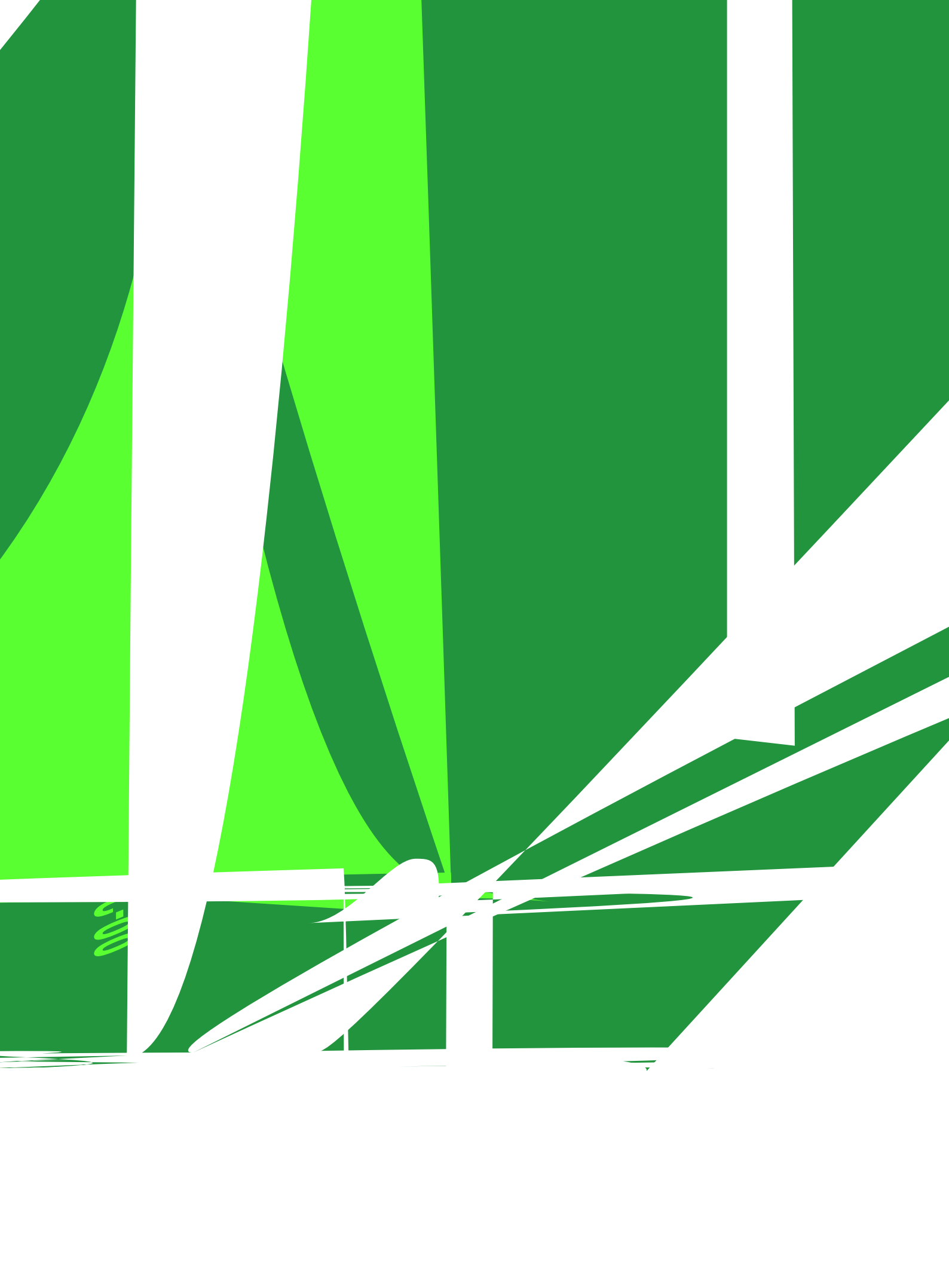
“ ”

CFCC/PEFC



“ ”





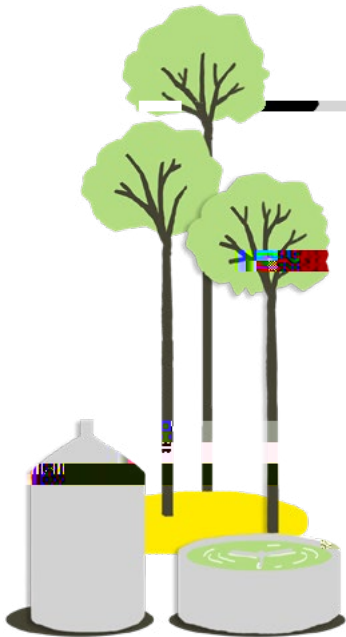
500

PEFC CoC						
PEFC CoC			PEFC	2017	APP PEFC CoC	16
	PEFC	CoC				

BV DDS						
	BV				BV DDS	
	BV DDS					

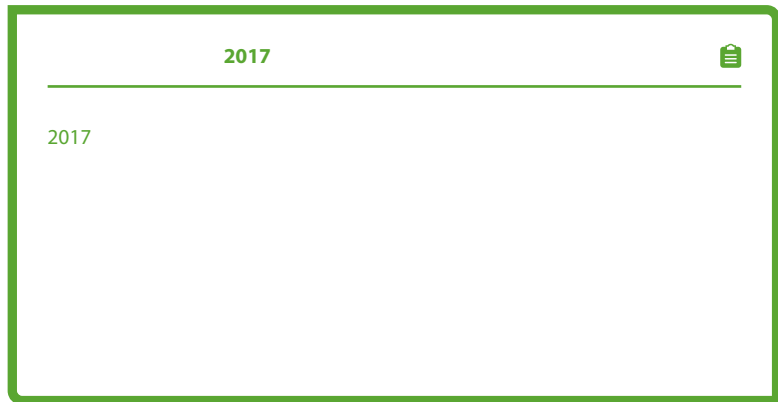


2017 APP





2017 APP



APP

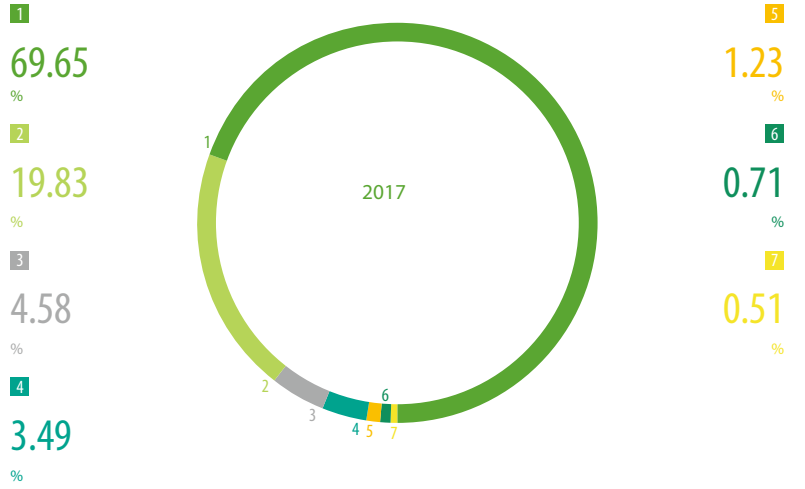
	2015	2016	2017
	488,100,000	283,152,000	283,152,000
	908,608,007	1,210,049,099	1,046,378,081
	129,942,465	134,535,550	135,358,599
	254,805,840	220,452,737	219,904,179
*	259,164,007	240,569,716	368,663,480
	451,802,163	489,439,287	445,290,787
	71,687,661	64,712,622	65,982,500
	64,178,333	57,168,302	56,721,070

*





APP



APP

2017

2016

2016 2017

"	"	"	"
2017	65.4	3.7	2016 69.1

2016	6	20		2017	11	10
				2,000		



APP

SO₂



NO_x



APP

2017

20mg/Nm³

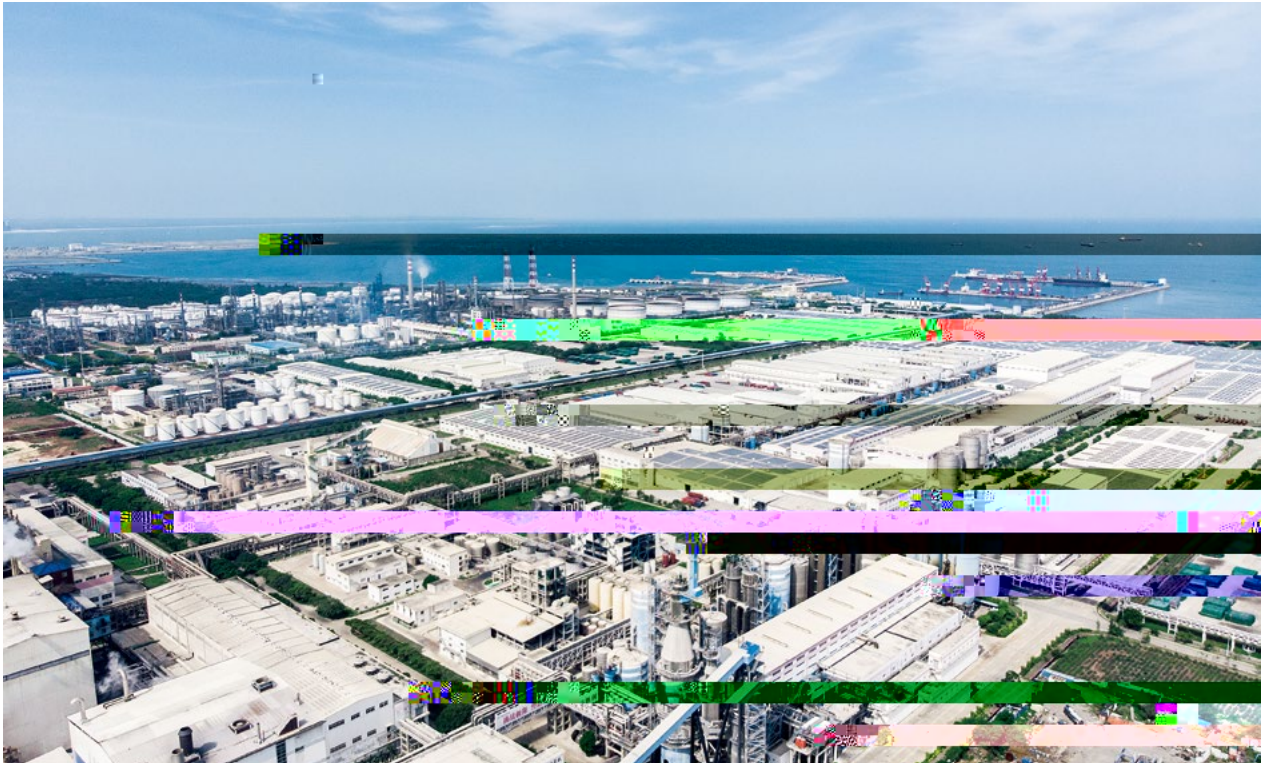
5 mg/Nm³

2019

2017

2018

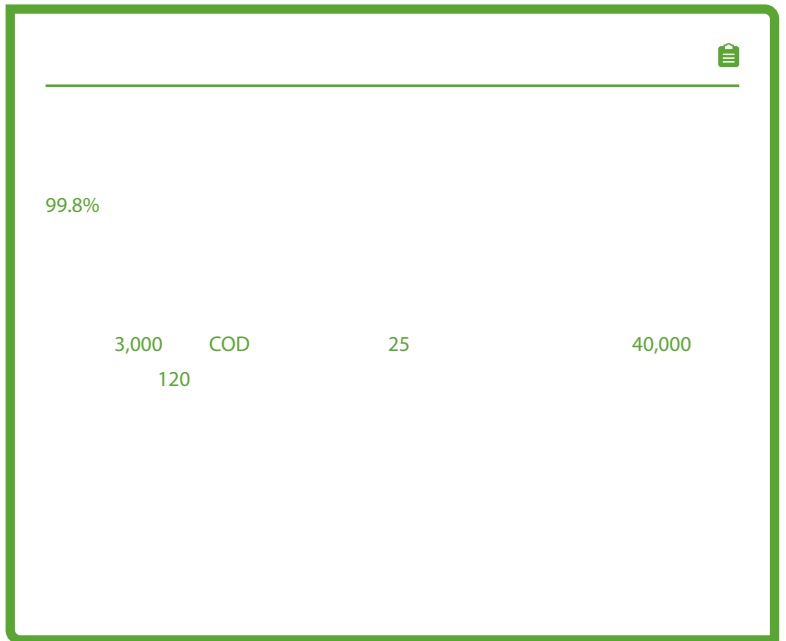




APP

"

"



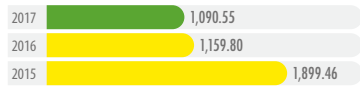
APP

" " " "

OHSAS18001

APP

2017 APP



79

1

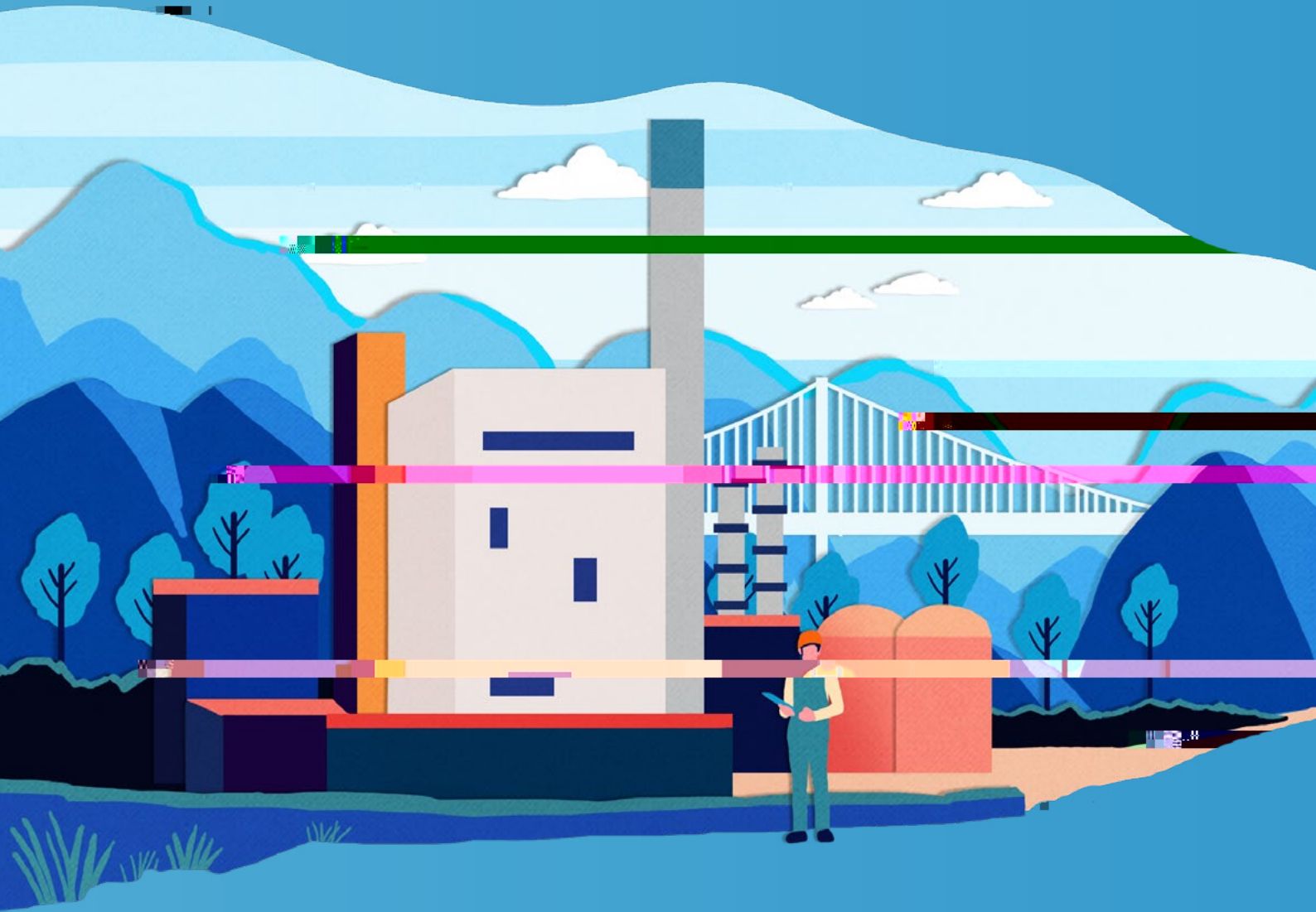


2017 APP

2006	OHSAS18001	2017
CQC		" "
5	2016	2017 55%

APP

"



APP

SDGs

4 优质教育



396.5

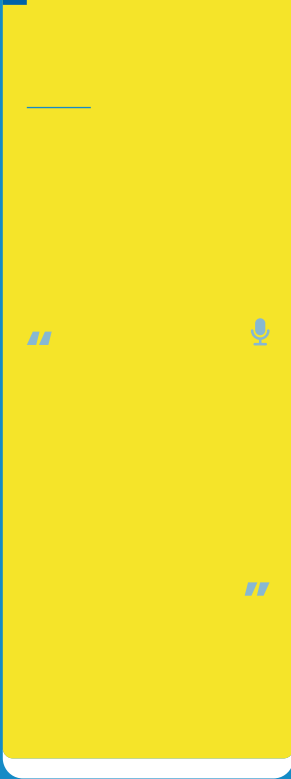
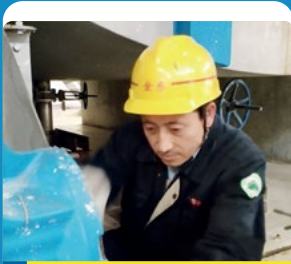
762,556.9

8 体面工作和
经济增长



30,862

APP



—

2016

“ ”

“

”

2017

“

”

29

“

1988 20

120

1995

JAMBI

JAMBI

“ ”

1,600

100%

70

JAMBI

22

16

APP

APP

1998

APP

1

5





2017



MBOS SDA

APP
MBOS

45

1

MBOS

2

3

PK

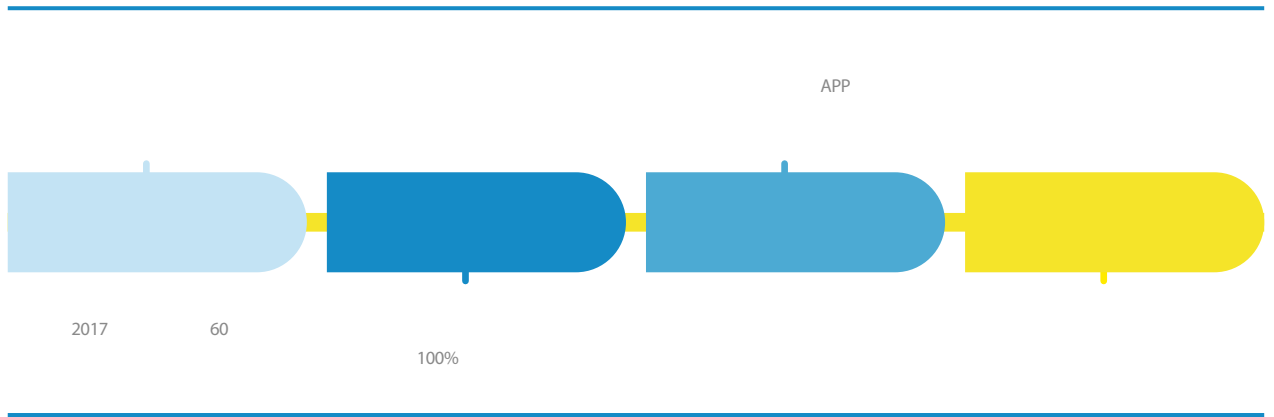




APP

2017

APP

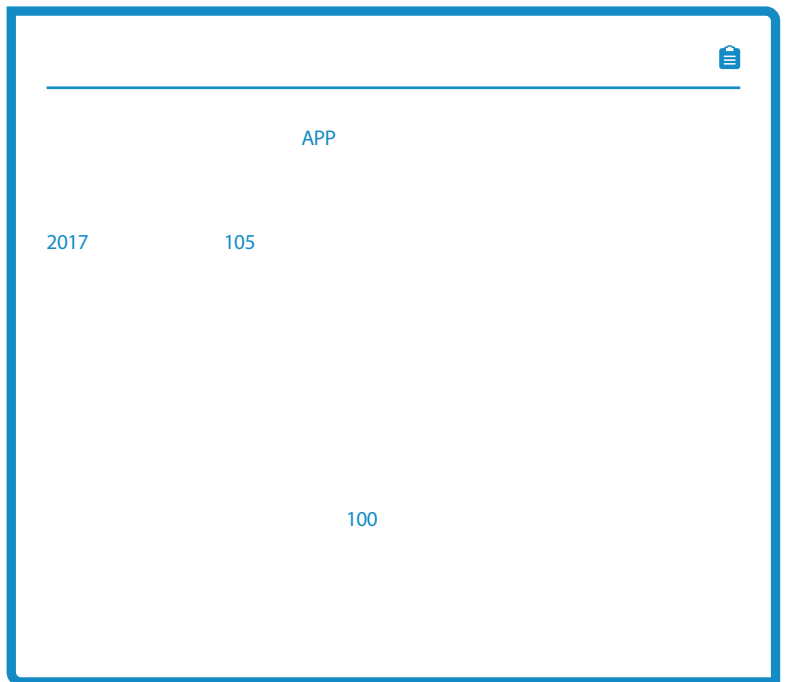


APP



1

2



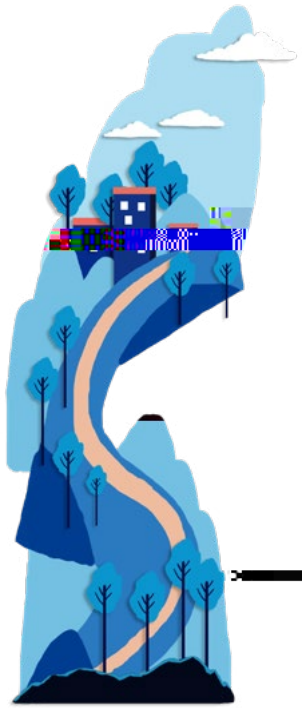
APP

2017 112 " 2012 300 35	97	2017 43

1 2

1

2

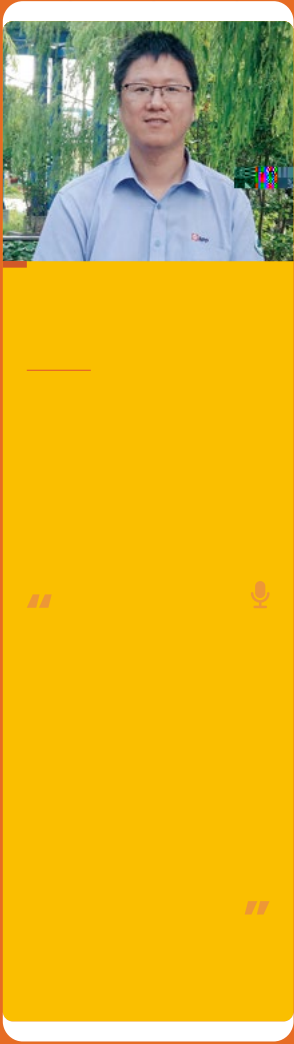


A photograph of a classroom setting. A teacher, a woman in a grey jacket, stands at a wooden podium on the left side of the frame, facing a group of students. The students are seated at long wooden desks arranged in rows. They are looking towards the teacher. In the background, there is a poster on the wall with the letters 'MBOS' and a red dragon-like graphic. The room has white walls and a doorway is visible in the background.

03



APP



2017

“ ”







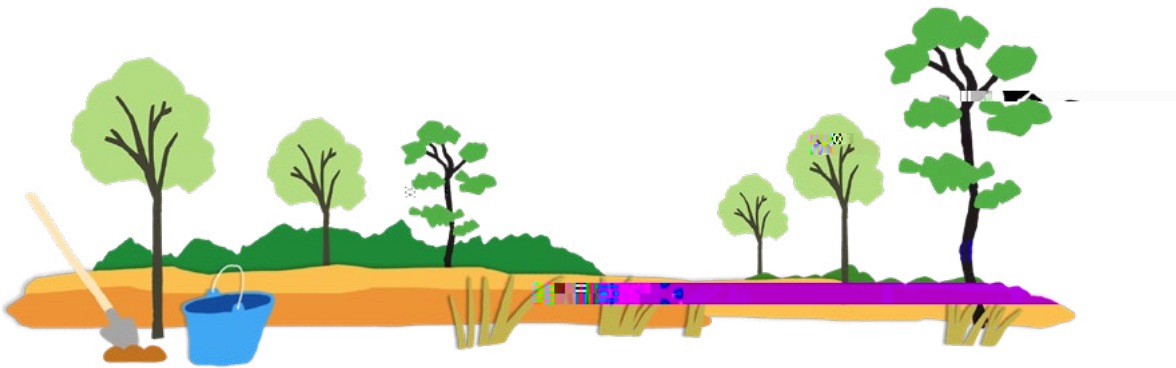
APP

300

540

150

1,200



1

2

3



1



2



3



APP

"
" 2017
1,000

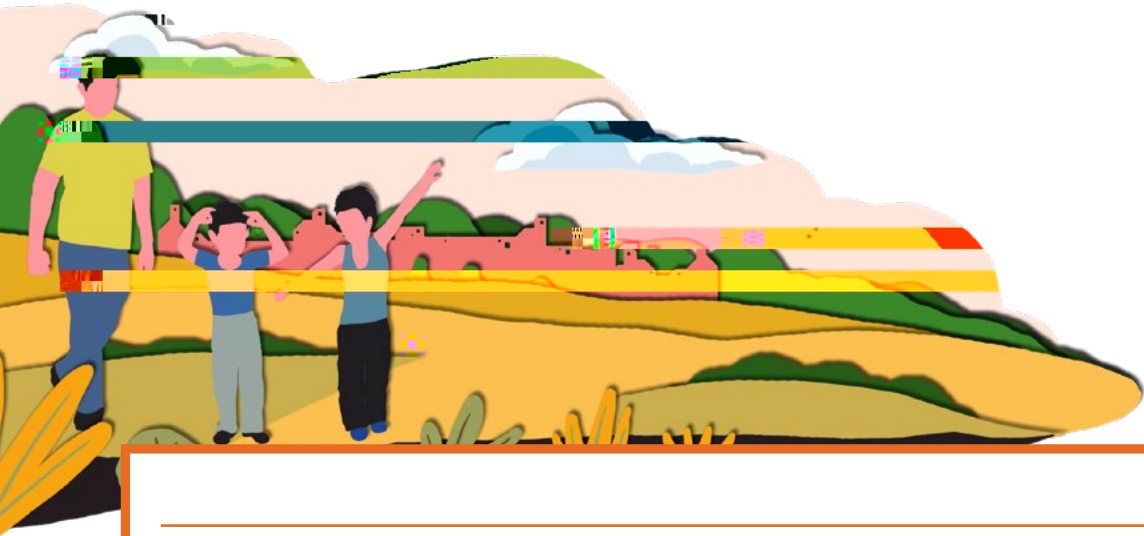


APP

APP

APP

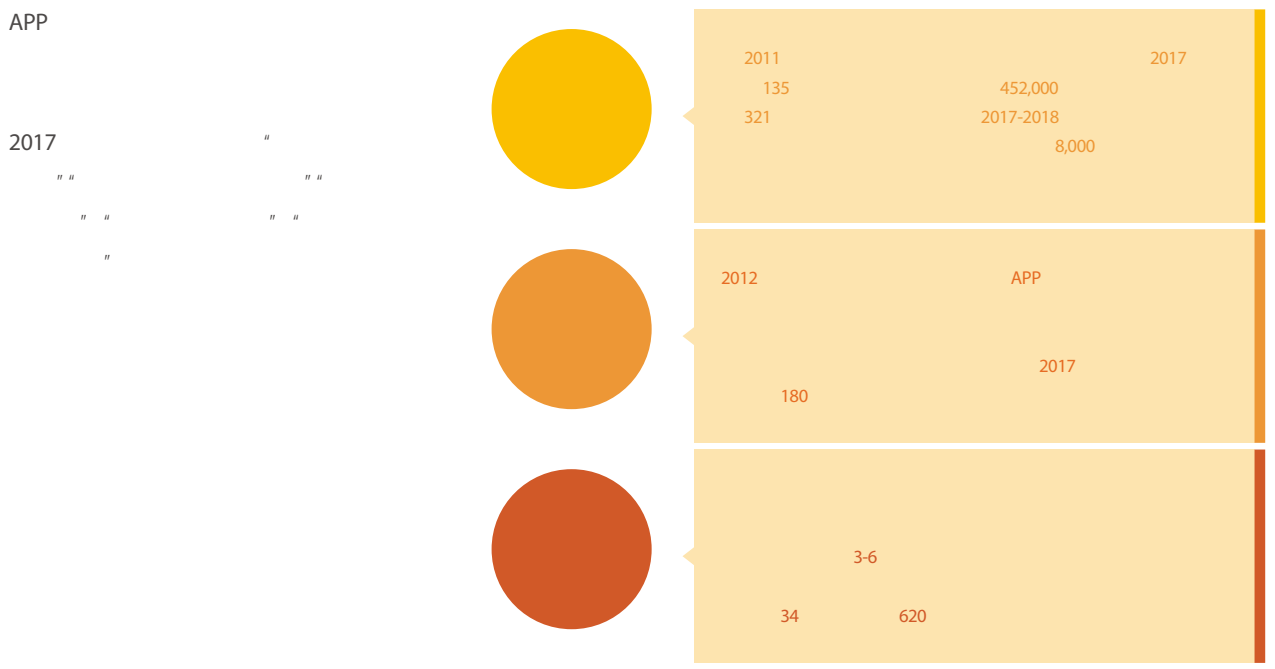
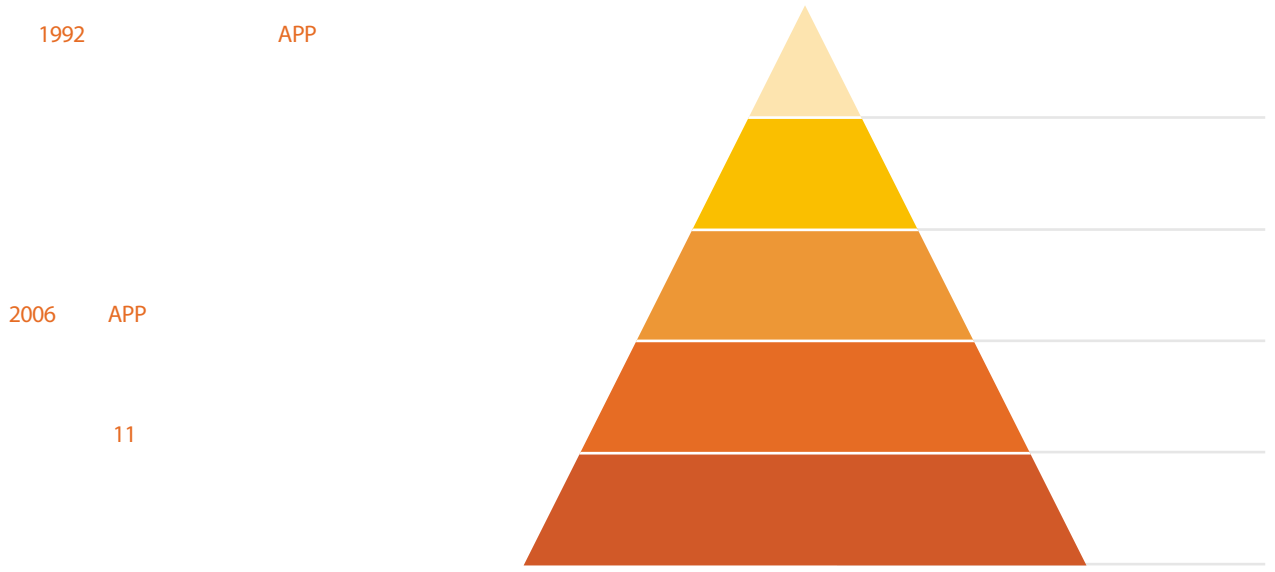
2017



2017 3

28







APP

APP

" APP

" "

"

"

"

" "

APP " "

2017 14 2017 10

7 600 2,000 42



1

2017 7 18 31 APP

" " 7
15



2

2017 " Looking into
the Future "

1

2



2008

"

50

2017

" "



2008

2017

2017

4,748

1,940



1

2



23

" " 2017 225

2010

105

805

2015

" 20

GRI

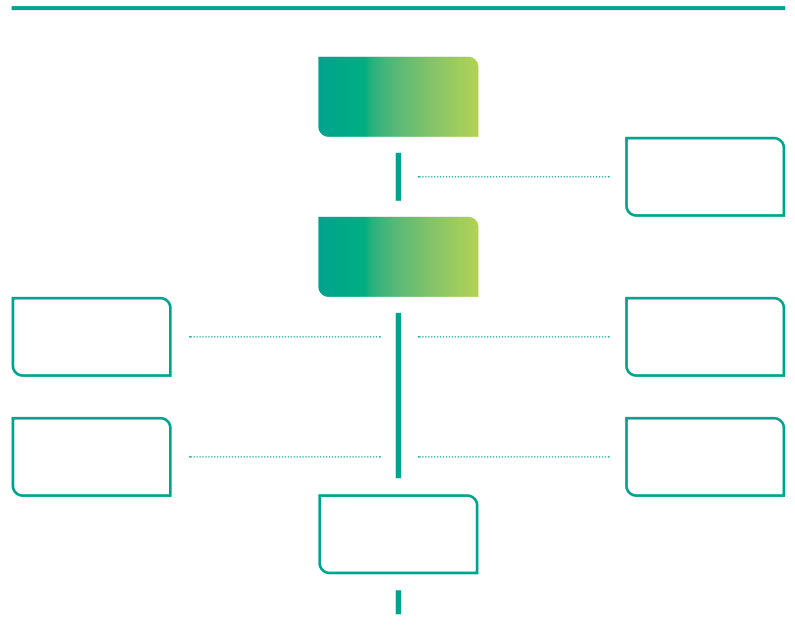


		Sinar Mas Paper (China)		2017 1 1			
Investment Co., Ltd.	" APP	2017 12 31		2018	GSSB	GRI	
"					"	GRI Standards	"
		2017 11		APP			
		9	APP			GRI	
<hr/>							
	" APP			"			
	"			"		GRI	
	"			"			
	"			"			
	"			"			
	"			"			
	"			"			
	"			"			
	"			"			
	"			"			
	" APP			" APP			
	"			"			
<hr/>							
					SGS-CSTC Standards Technical Service		
					Co., Ltd. " SGS"		
					"	"	



1992

APP



2017



APP

APP " "

2015

APP

APP		CFCC/PEFC FM
1	3,086.63	CFCC/PEFC-FM-ZTFC-000030
2	746.97	CFCC/PEFC-FM-ZTFC-000030
3	2,456.91	CFCC/PEFC-FM-ZTFC-000030
4	42,873.90	CFCC/PEFC-FM-ZTFC-000005
5	68,583.00	CFCC/PEFC-FM-ZTFC-000003
6	42,672.60	CFCC/PEFC-FM-ZTFC-000018
7	44,076.10	CFCC/PEFC-FM-ZTFC-000006
8	11,072.00	CFCC/PEFC-FM-ZTFC-000007
9	14,240.00	CFCC/PEFC-FM-ZTFC-000008
10	19,642.50	CFCC/PEFC-FM-ZTFC-000017
11	3,820.40	CFCC/PEFC-FM-ZTFC-000031
12	1,389.00	CFCC/PEFC-FM-ZTFC-000031
	254,660.01	

APP 2017

	ISO9001	ISO14001	OHSAS18001	PEFC CoC

APP PEFC CoC

APP	
1	SGS-CFCC/PEFC-COC-001002
2	SGS-CFCC/PEFC-COC-001026
3	SGS-CFCC/PEFC-COC-001030
4	SGS-CFCC/PEFC-COC-001031
5	SGS-PEFC/COC-0805
6	SGS-CFCC/PEFC-COC-001032
7	SGS-PEFC/COC-1733
8	SGS-PEFC/COC-1463
9	SGS-CFCC/PEFC-COC-001013
10	SGS-PEFC/COC-1467
11	SGS-PEFC/COC-0249
12	SGS-CFCC/PEFC-COC-001037
13	SGS-PEFC/COC-0787
14	SGS-PEFC/COC-1464
15	SGS-PEFC/COC-1640
16	SGS-PEFC/COC-1465

2012 APP " 2020 2040 2050

SDGs
APP
SDGs

2017 94.4%

SDGs






APP 2015

APP
APP

APP

APP

SDGs

			NGOs	/	
SDGs					



GRI

" "

23

2016

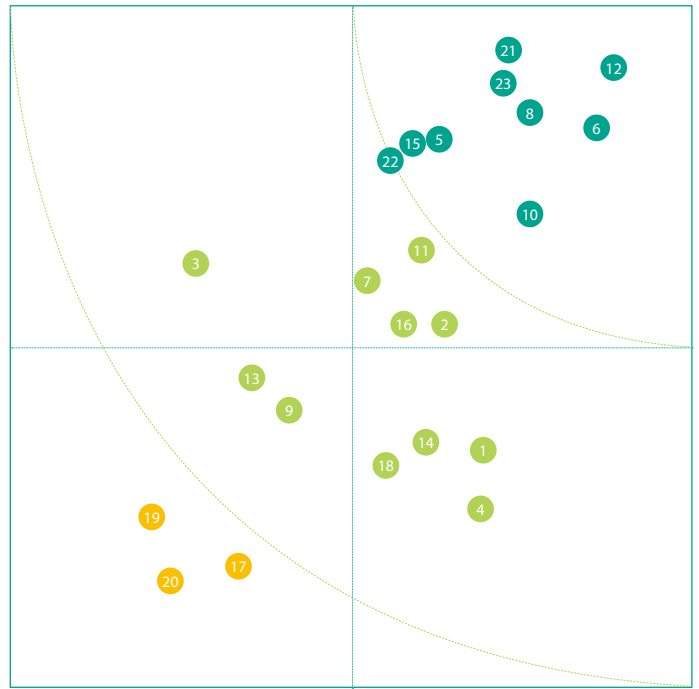
" "

" "

/

1,808

NGOs



12	11	17
6	2	19
21	7	20
23	16	
8	1	
10	14	
5	4	
15	18	
22	9	
	13	
	3	



"	"	"	2017	9	1	
	APP					6
					55	
	APP		2017			
2017	9	"				
			50		2,568	



	2015	2016	2017
	1,531	1,618.32	1,582
	22.40	22.52	26
	454	473.73	553
	23.80	31.68	36
	21	24.19	26
	2,516.78	1,326.70	1,869

	2015	2016	2017
	36,923	33,784	26,645
	2,516.78	1,326.70	1,869

APP

		2017
		5,195,476.17
		687.50
		8,155.76
		26,112.59
		19,400.94
		7,350.49
		2.09
		272,813.88
		2,527,691.5
		2,355.62
		149,857.23
		1,455,093.24

		2015	2016	2017
"	"	120,477,308	124,417,318	118,173,907
"	"	88,522,504	92,621,594	84,968,795
	APP	6.74	12.23	6.35
		15.12	21.87	13.90
	COD	0.33	0.69	0.26
	COD	1.20	1.36	1.99

2017 118,173,907
99.68% 0.19%
0.13%

2017

APP

	2015	2016	2017
SO ₂	2,266.54	1,892.79	2,622.63
NO _x	5,747.13	5,374.06	6,883.50

APP

"

2017

		2017
		701,828.73
		219,112.58
		482,716.15
		513,254.12
		232,004.87
		281,249.25
		134,760.72
		90,274.04
		44,486.68
		85,483.89
		32,026.06
		53,456.29
		1,032.55
		914.78



APP

2017

4

977,400

APP

100%

		2017
		21,746
		15,779
		5,967
		1,887
		1,156
		731
		2,259
		1,473
		822
		3,786
		1,274
		698
		638
		264
		23
		30
		663
		196

		2015	2016	2017
	%	24.56	18	15.77
	%	25.08	16.2	15.09
	%	23.04	13.4	17.5

/

		2017
		634
		568
		50
		991
		943
		31

		2015	2016	2017
	%	1	1	1
	%	8	7	9
	%	91	92	90

APP

		2015	2016	2017
		532.42	442.58	615.55
		1,899.46	1,159.8	1,090.55

2017
206,759.5
79 1

APP

2017

		2015	2016	2017
		488.89	423.5	396.50
		720,405	685,563	762,556.9
		65	63	96
		7.37	16.68	29.51
		76.47	33.9	28.77
		40.06	31.34	32.71
		35.69	40.22	34.39

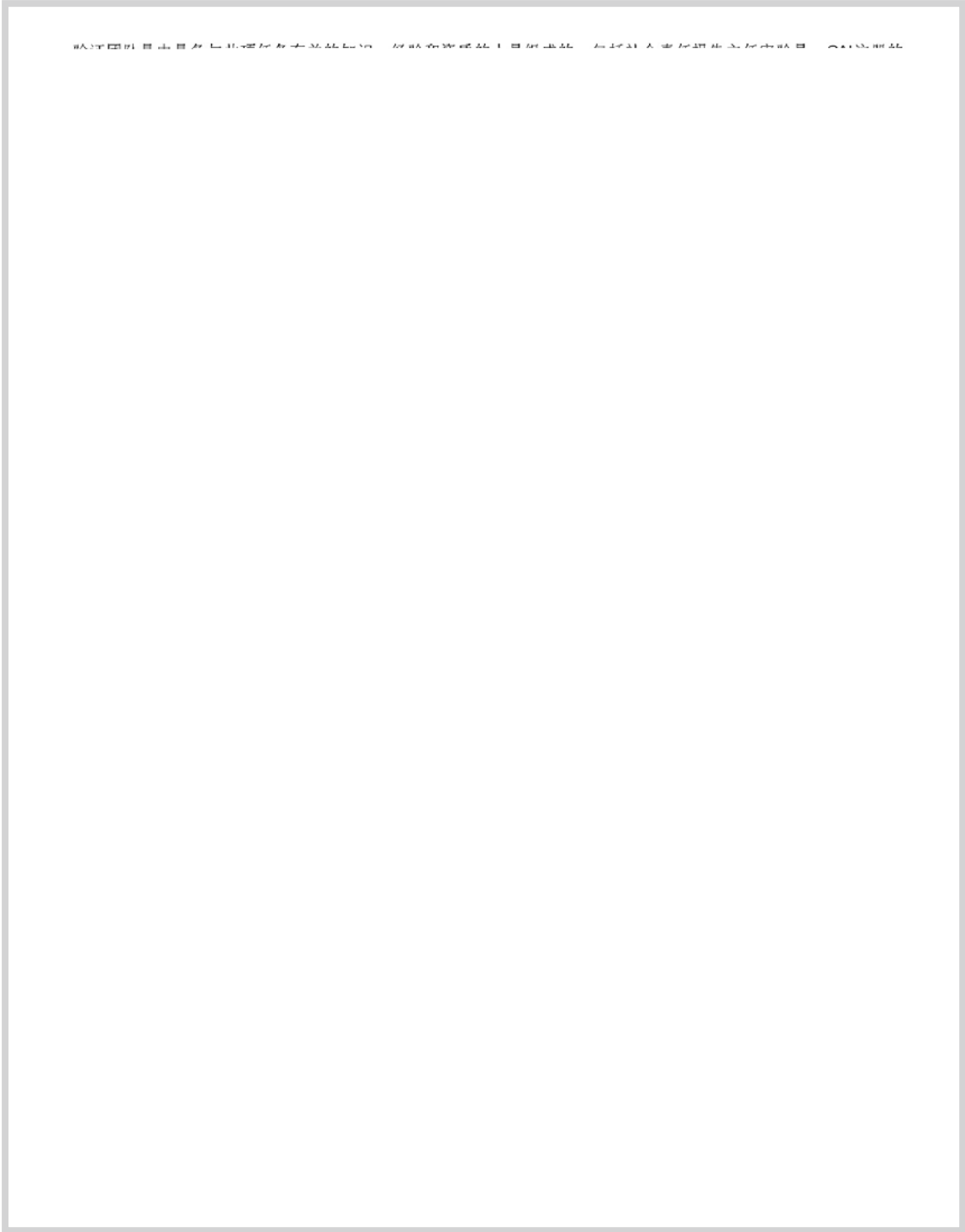
		2015	2016	2017
	%	25.25	28.1	27.44
		326	374	528
	%	18.46	22.5	24.28

		2015	2016	2017
30	%	30	25	27
30-50	%	67	73	70
50	%	3	2	3

" " APP 2017 2017

2015 2017 2017
377 54 261
62





时效性

APP（中国）披露的数据都是在报告周期中的，并使利益相关方及时获取信息，做出合理决定。

清晰性

报告行文清晰，能够为对 APP（中国）及其行业有合理了解的利益相关方所理解。报告在披露信息时，APP（中国）考虑到信息的利用方式和类型，使用了一些描述、图表和图片等多种形式。

可靠性

通过内部收集、记录、编排、分析及披露的方式，数据和信息就可被追溯和验证，并可确保信息的质量及实质性。此外，通过聘请独立的外部组织对报告进行验证，更为报告的可靠性提供了保障。

签字：

代表道标标准技术服务(上海)有限公司



曾伟明
总监，中国及香港地区
认证及企业优化
2018年10月8日

中国上海市徐汇区宜山路900号B-11楼
WWW.SGSGROUP.COM.CN

GRI

GRI			/
GRI 102	2016	102-1	6
		102-2	6;11;14;16;18;55
		102-3	74
		102-4	6
		102-5	6
		102-6	6;11;14;16;18
		102-7	6
		102-8	65
		102-9	26
		102-10	6;54;55
		102-11	55;57;61
		102-12	56;57
		102-13	8;9
		102-14	2;3
		102-15	11;21;37;45;57
		102-16	6;7;61
		102-17	6;7;61
		102-18	55
		102-40	58
		102-41	64
		102-42	58
		102-43	58
		102-44	58
		102-45	54
		102-46	54;60
		102-47	59
		102-48	
		102-49	
		102-50	54
		102-51	54
		102-52	54
		102-53	74
		102-54	GRI 54
		102-55	GRI 71-73
		102-56	GRI 68-70
		GRI 103	2016
GRI 201	2016	201-1	61
GRI 103	2016		45
GRI 203	2016	203-2	61
GRI 103	2016		25;26;62
GRI 204	2016	204-1	26
GRI 103	2016		7;61
GRI 205	2016	205-2	61
		205-3	

GRI					/
GRI 103	2016				57;62
GRI 301	2016	301-1			62
		301-2			62
GRI 103	2016				31;62
		302-1			63
GRI 302	2016	302-2			63
		302-4			31
GRI 103	2016				29;63
		303-1			63
GRI 303	2016	303-2			
		303-3			21;30
GRI 103	2016				24
		304-1			24;58
GRI 304	2016	304-2			24;58
GRI 103	2016				29;31;32;63
GRI 305	2016	305-7	NO _x	SO _x	32;63
GRI 103	2016				29;30;33;63;64
		306-1			63
GRI 306	2016	306-2			64
		306-3			
		306-5	/		
GRI 103	2016				29;64
GRI 307	2016	307-1			64
GRI 103	2016				26;62
GRI 308		308-1			62
2016		308-2			62
GRI 103	2016				64
		401-1			65
GRI 401	2016	401-2			64
		401-3			65
GRI 103	2016				34;35;66
GRI 403		403-2			34;66
2016		403-3			66
GRI 103	2016				37;39;40;66
		404-1			66
GRI 404	2016	404-2			39;40;66
GRI 103	2016				64;66
GRI 405	2016	405-1			64;66
GRI 103	2016				41;64;66
GRI 406	2016	406-1		2016	

APP 2017

533 II 31 200051
+86-21-2283 8888
+86-21-2283 9063
csr@app.com.cn

APP

/

NGOs

1 5 1 5

1. APP 2017

2.

3.

4. APP

5. APP

6.



Sinar Mas Paper (China) Investment Co., Ltd.

533

II 31

+86-21-2283-8888

+86-21-2283-9063

200051

www.app.com.cn